

Modified Polymer Cementitious Based, Non Metallic Floor Hardener for Industrial Flooring

Specialty for Concrete Imprint or Stamping System

Description

Cem Floor Color, is a partially premixed ready to use, dry shake over a freshly floated on concrete floor, natural aggregate concrete floor hardener with excellent properties of impart, adhesion and high abrasion resistance.

Due to its special formulation, **Cem Floor Color** product is based on selected high grade of Silica Wearing Course Mineral, Original Portland Cement Type II & Rheological Additives, for better workability of machinery floating on all types of flooring.

Use

Cem Floor Color is recommended for superficial of floor slabs and screeds where smoothing surface, oils, greases, reduces dusting is required.

- Warehouses,
- Workshops,
- Car Parking,
- Complex Commercials
- Factories

Colors Available

Mid Grey, Light Grey, Green, Red, Cotta Red, Brown, Yellow & Mid White

Preparation

The surface of the sub-floor must be clean, sound and free from dust,

Application

The mixed material is poured onto the prepared floor surface and spread

Coverage

Medium Duty Floor Approximately 4.00 kg/m²

Heavy Duty Floor Approximately 6.00 kg/m²



Cem Floor Color-Seamless Flat Texture Color



Cem Floor Color-Seamless Flat Texture Color



Cem Floor Color- Jointing Flat Texture Color



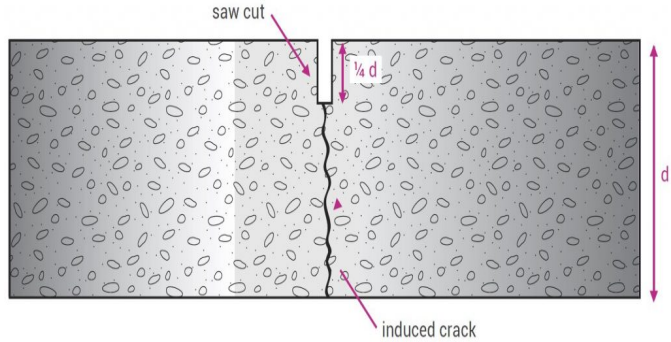
Cem Floor Color-Jointing Flat Texture Color



Cem Floor Color-Flat Smooth Texture Color



Cem Floor Color-Flat Smooth Texture Color



Saw-cut Method, Form as Construction Joint



Wet Applied Method, Expansion Joint

Technical Data

Cem Floor Color

Density Fresh Mortar			approximately 1.90-2.10 kg/litre
Mohs Hardness	DIN 52450	at 25°C	7 to 9 (steel Score)
Final Set (Vicat)	DIN 52450	at 25°C	approximately >3 hour
Compressive Strength	DIN 52450	at 25°C	after 28 days: 75-80 N/mm²
Tensile Strength	DIN 52450	at 25°C	after 28 days: 0.8-1.1 N/mm²
Flexural Strength	DIN 52450	at 25°C	after 28 days: 11 N/mm²
Ball pressure hardness (Brinell)		at 25°C	after 1 days: 28 N/mm² after 3 days 45 N/mm² after 7 days 62 N/mm²

Storage Shelf Life Packaging

Cem Floor Color, 6 months if stored in dry conditions.
Net weight 25 kg bag

Handling Precautions

Wash off any mortar or latex on the skin before it dries. During mixing and application ensure adequate ventilation since the latex component contains ammonia which is volatile and may cause eye watering in confined spaces. Avoid generation of airborne dust during mixing. Cem Floor Color powder contains more than 20% Portland cement and, therefore, in line with current legislation, is classified as irritating to eyes and skin. For this reason the following precautions should be observed: - Avoid contact with the skin and eyes; in case of contact with the eyes, rinse immediately with plenty of water and seek medical advice; wear suitable gloves and keep the product out of the reach of children.

The General Term & Conditions

All recommendations for use of our product, whether given by us in writing, verbally, or to be implied from the results of tests carried out by us are based on the current state of our knowledge. Notwithstanding any such recommendations the Buyer shall remain responsible for satisfying himself that the products as supplied by us are suitable for this intended process or purpose. Since we cannot control the application, use or processing of the products, we cannot accept responsibility therefore. The Buyer shall ensure that the intended use of the products will not infringe any third party's intellectual property rights. We warrant that our products are free from defects in accordance with and subject to our general conditions of supply.

The above mentioned details Specified key data are individually checked throughout, guarantee, and included in the certificates of Analysis (CoAs). & Typical key data are spot checked, the value are typical for the product and are indicated for information only. The values are not guaranteed or included in the CoAs.



LaMaCo System Sdn Bhd

407, Jalan Perusahaan 6, Taman Bandar Baru Mergong, 05150 Alor Setar, Kedah. Malaysia
Tel : +60-4-771 1111 Fax : +60-4-772 4444
Http : www.lamaco.com Email : info@lamaco.com